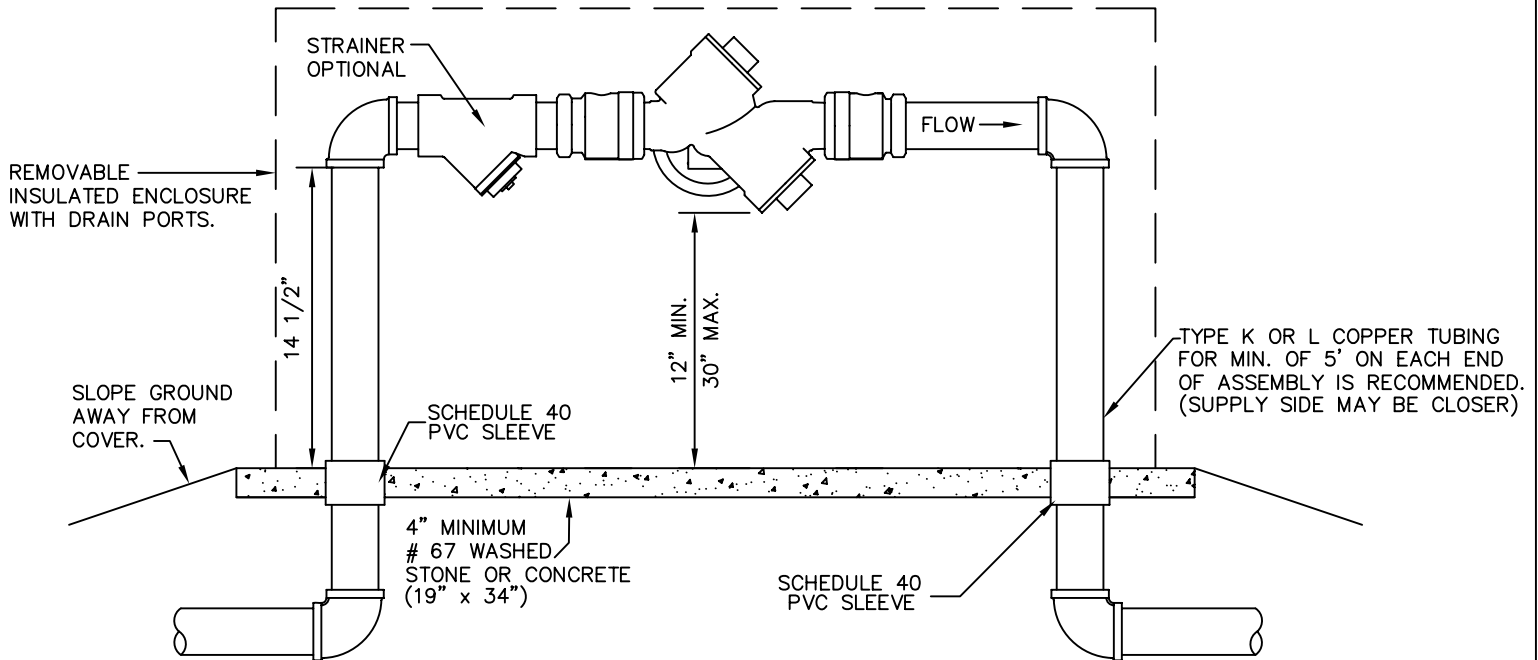
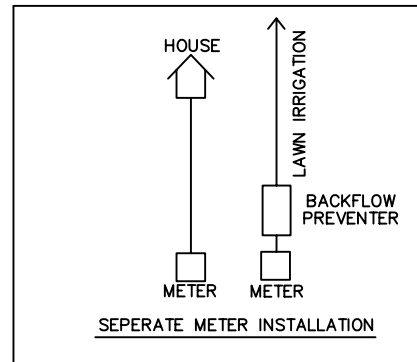


LAWN IRRIGATION



BACKFLOW PREVENTER PLACEMENT FOR LAWN IRRIGATION



NOTES:

1. THERE SHALL BE NO UNAPPROVED TAPS, PIPING BRANCHES, BYPASS PIPING, HYDRANTS, FIRE DEPT. CONNECTION POINTS, OR OTHER WATER-USING DEVICES CONNECTED TO THE SUPPLY LINE BETWEEN ANY WATER METER AND ITS DWI-REQUIRED BACKFLOW PREVENTER.
2. REMOVEABLE INSULATED ENCLOSURE WITH FREEZE PROTECTION BY 110 VOLT HEAT TAPE IS RECOMMENDED FOR ABOVE GROUND ASSEMBLIES.
3. THE STATE OF NC REQUIRES A SEPERATE METER FOR LAWN IRRIGATION AS OF JULY 1st, 2009
4. SEE GENERAL INFO PAGE OF WEBSITE FOR CONNECTION FEES (NO TAP LARGER THAN 1-1/2 WILL BE ALLOWED FOR LAWN IRRIGATION.)
5. INSPECTIONS ARE REQUIRED FOR ALL BACKFLOW PREVENTERS. CALL 731-5556 FOR INSPECTION
6. ALL BACKFLOW PREVENTERS ARE REQUIRED TO BE TESTED ANNUALLY.

DAVIDSON WATER INC.
WELCOME, NORTH CAROLINA
BACKFLOW PREVENTION

BACKFLOW PREVENTION
STANDARD DETAIL

REDUCED PRESSURE PRINCIPLE
ASSEMBLY (RP) 3/4-1-1/2" (L.I.)
ABOVE GROUND

SCALE: NOT TO SCALE
REVISED: 07/01/09