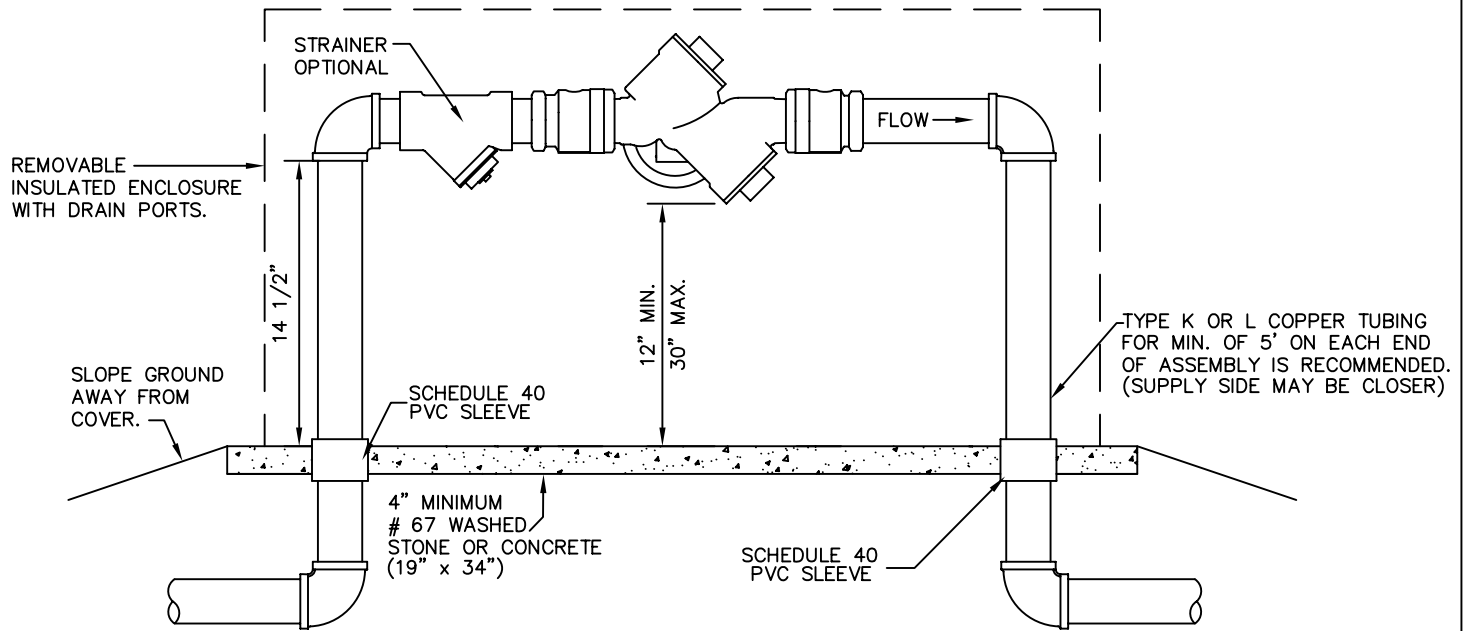


COMMERCIAL



NOTES:

1. THERE SHALL BE NO UNAPPROVED TAPS, PIPING BRANCHES, BYPASS PIPING, HYDRANTS, FIRE DEPT. CONNECTION POINTS, OR OTHER WATER-USING DEVICES CONNECTED TO THE SUPPLY LINE BETWEEN ANY WATER METER AND ITS DWI-REQUIRED BACKFLOW PREVENTER.
2. TANDEM BACKFLOWS REQUIRED IF SERVICE CANNOT BE INTERRUPTED.
3. REMOVEABLE INSULATED ENCLOSURE WITH FREEZE PROTECTION BY 110 VOLT HEAT TAPE IS RECOMMENDED FOR ABOVE GROUND ASSEMBLIES.

DAVIDSON WATER INC.
WELCOME, NORTH CAROLINA
BACKFLOW PREVENTION

BACKFLOW PREVENTION
STANDARD DETAIL

REDUCED PRESSURE PRINCIPLE
ASSEMBLY (RP) 3/4-2" (COMMERCIAL)
ABOVE GROUND

SCALE: NOT TO SCALE
REVISED: 01/21/09